



Spare parts list

Hydraulic Submersible Pumps

WAP 2, WAP 3





2008-06

No. 3392 5158 01

© Copyright Chicago Pneumatic Construction Tools
STOCKHOLM • SWEDEN



Introduction

Welcome! Protect your investment in the world's finest hydraulic tools. Use genuine CP replacement parts.

The purchase of replacement parts for your CP tools deserves the same good judgment that resulted in the purchase of the tools themselves. Each genuine CP part is made from carefully selected and inspected material, subjected to sophisticated machinery and finishing processes and heat-treated to produce just the right combination of hardness, ductility and impact resistance for its intended use. Each part is identical to, and made concurrently with, parts used in production tools.

The use of parts other than genuine CP replacement parts can lead to substandard performance, early failure, possible damage of other parts and, in some instances, unsafe conditions.

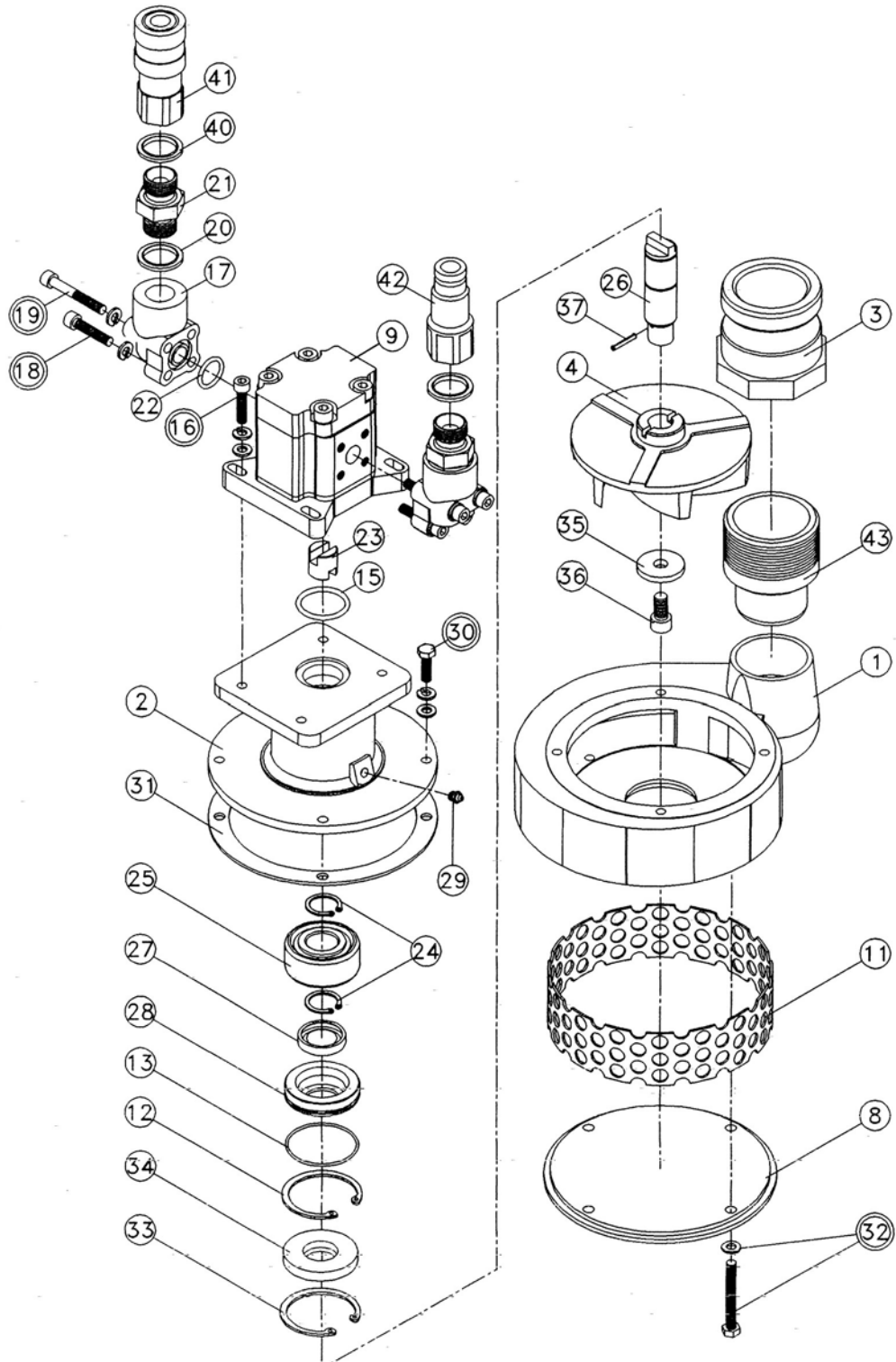
Use only authorized parts. Any damage or malfunction caused by unauthorized parts will not be covered by the Warranty or Product Liability.

Any machine modification not approved by Chicago Pneumatics may result in serious injuries to yourself or others.

To reduce the risk of injury, read and understand the relevant safety and operating instructions before operating the machine.

Before undertaking any maintenance or changing the working tool on hydraulic machines, always switch off the hydraulic oil supply and bleed the machine by activating the start and stop device. Then disconnect the hydraulic hose from the machine.

The CP WAP 2 and WAP 3 hydraulic submersible pumps are designed to meet the demand for efficient pumping, such as emergency pumping, pumping in tunnels and emptying of excavations and cellars.

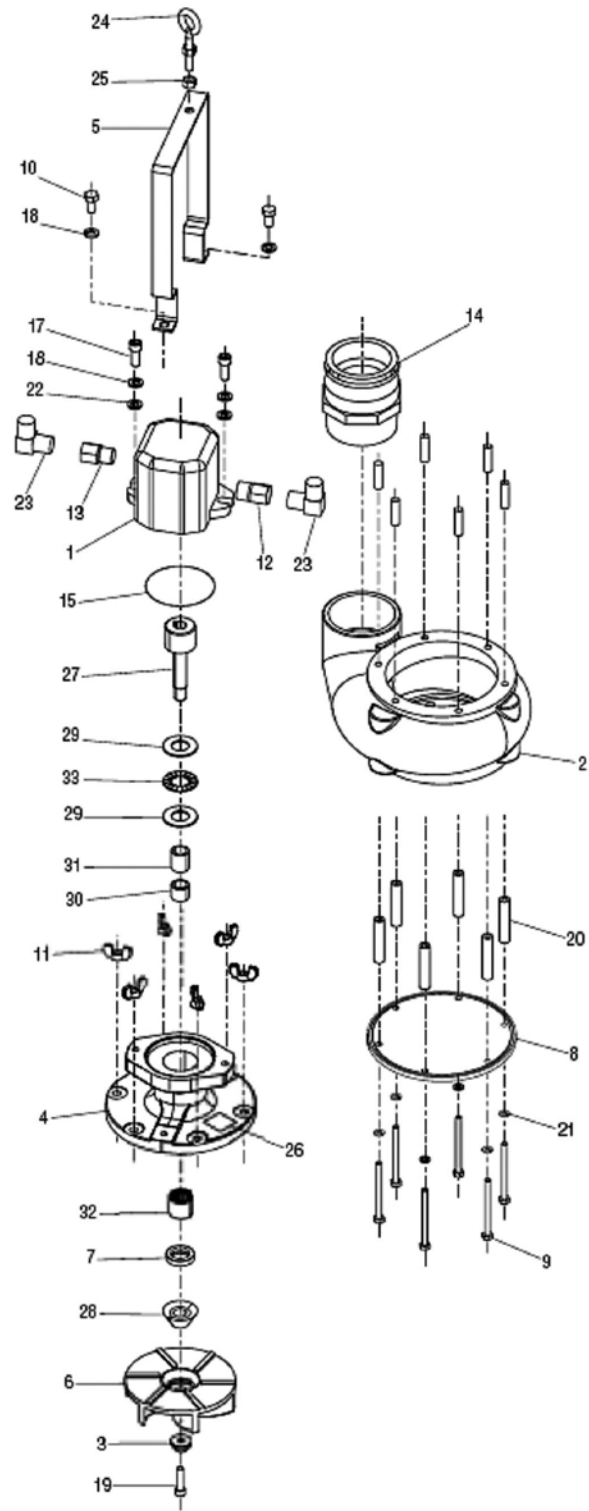


A



WAP 2

No.	Part Number	Quantity	Description
1	3376 6060 21	1	Pump housing
2	3376 6060 22	1	Bearing housing
3	3378 2060 03	1	Coupling, discharge For 2" Snap-on connection
4	3376 6060 03	1	Blade
8	3376 6060 10	1	Bottom plate
9	3378 2060 08	1	Hydraulic motor 6 cc
11	3376 6060 09	1	Filter
12	3378 2060 12	1	Circlip J 47
13	3378 2060 13	1	O-ring $\varnothing 43 \times 1.6$
15	3376 1000 38	1	O-ring $\varnothing 28 \times 3$
16	3378 2060 16	4	Cap screw M6x25
17	3378 2060 17	2	Connecting block Incl. fig. No. 18, 19, 22
18	3378 2060 44	4	Cap screw M6x30
19	3378 2060 18	4	Cap screw M6x45
20	3371 8057 14	2	Seal ring Bonded seal 1/2" BSP
21	3371 8057 11	2	Nipple 1/2" BSP M – 1/2" BSP M
22	3378 2060 21	2	O-ring $\varnothing 15.88 \times 2.62$
23	3376 6060 06	1	Coupling Dog shaft
24	3378 2060 24	2	Circlip A 20
25	3378 2060 25	1	Bearing $\varnothing 20 / \varnothing 47 \times 20.6$
26	3376 6060 05	1	Shaft
27	3376 1001 66	1	Lip seal $\varnothing 20$, high pressure
28	3376 6060 07	1	Seal retainer
29	3376 1001 64	1	Grease nipple M6x1
30	3378 2060 30	4	Cap screw M6x20
31	3376 6060 11	1	Gasket complete Service kit
32	3376 1001 63	4	Cap screw M6x50
33	3378 2060 12	1	Circlip J 47
34	3376 1001 65	1	Seal Water protection
35	3376 6060 08	1	Washer
36	3378 2060 36	1	Screw M8x16
37	3377 0004 81	1	Roll pin $\varnothing 3 \times 20$
40	3371 8057 14	2	Seal ring Bonded seal 1/2" BSP
41	3371 8051 33	1	Quick-release coupling 1/2" female
42	3371 8051 34	1	Quick-release coupling 1/2" male
43	3376 6060 13	1	Nipple 2" male
	3376 6060 15		Seal kit Incl. fig. No. 13, 15, 22, 27, 34
	3378 0021 00		Discharge hose 10 m, 2", Incl. snap-on hose fitting and clamps



B



WAP 3

No.	Part Number	Quantity	Description
1	3376 6120 01	1	Hydraulic motor
2	3376 6120 02	1	Housing Incl. volute and 6 off studs
3	3376 6120 03	1	Cone washer
4	3376 6120 04	1	Cover plate
5	3376 6120 05	1	Handle
6	3376 6120 06	1	Impeller
7	3376 6120 07	1	Seal
8	3376 6120 08	1	Base
9	3376 6120 09	6	Screw 1/4" - 20 x 3 1/4"
10	3376 6120 10	2	Screw 3/8" - 16 x 3/4"
11	3376 6120 11	6	Wing nut 3/8" - 16
12	3376 6120 12	1	Adapter 1-1/16 M SAE - 1/2" NPT F
13	3376 6120 13	1	Adapter 7/8" M SAE - 1/2" NPT F
14	3376 6120 14	1	Coupling 3" Cam locking, male
15	3376 6120 15	1	O-ring
17	3376 6120 17	2	Cap screw 3/8" - 16 x 1"
18	3376 6120 18	4	Lock washer 3/8"
19	3376 6120 19	1	Cap screw 5/16 - 18 x 1 1/4"
20	3376 6120 20	6	Bushing 1/2" aluminium
21	3376 6120 21	6	Lock washer 1/4"
22	3376 6120 22	2	Washer 3/8" Flat
23	3376 6120 23	2	90° Elbow 1/2" NPT M - 1/2" NPT M
24	3376 6120 24	1	Eyebolt 3/8" - 16 x 3 1/2" with nut
25	3376 6120 25	1	Hex nut 3/8" - 16
27	3376 6120 27	1	Drive shaft
28	3376 6120 28	1	Seal guard
29	3376 6120 29	2	Thrust washer
30	3376 6120 30	1	Race Short bearing
31	3376 6120 31	1	Race Long bearing
32	3376 6120 32	1	Bearing Caged retained rollers
33	3376 6120 33	1	Bearing Thrust, needle
	3378 0021 01	1	Discharge hose 10 m, 3", Incl. snap-on
	3371 8051 56	1	Quick-release coupling 1/2" female, not illustrated
	3371 8051 57	1	Quick-release coupling 1/2" male, not illustrated
	3371 8057 32	1	Protective cap 1/2" male, not illustrated
	3371 8057 33	1	Protective cap 1/2" female, not illustrated



2008-06

No. 3392 5158 01

© Copyright Chicago Pneumatic Construction Tools
STOCKHOLM • SWEDEN

Chicago Pneumatic Construction Tools